



**231 High Street**

ST7 8BN

**Offers In Excess Of £130,000**



2



1



2



STEPHENSON BROWNE





This spacious forecourted mid terraced home in Alsagers Bank features an upstairs bathroom and two reception rooms, and would make an ideal first time buy!

The property (and energy efficiency) has been improved in recent years, including new UPVC windows and doors, making an excellent home for those wishing to make that all important first step onto the property ladder.

Two spacious reception rooms and a modern fitted kitchen complete the ground floor, whilst upstairs there are two double bedrooms and a family bathroom. The low maintenance rear garden is mostly paved, with outbuildings providing useful storage space.

Situated in Alsagers Bank, the property offers an excellent balance between a village location close to countryside, whilst retaining the convenience of being in close proximity to the wealth of amenities within Newcastle-Under-Lyme town centre itself. Commuting routes such as the M6, A500 and A34 are all within easy reach.

An ideal first time buy which needs to be seen to be fully appreciated! Please contact Stephenson Browne to arrange your viewing.

#### Front Reception Room

12'7" x 11'4" (3.842 x 3.461)

Wooden flooring, composite front door and UPVC double glazed window, ceiling light point, radiator.

#### Rear Reception Room

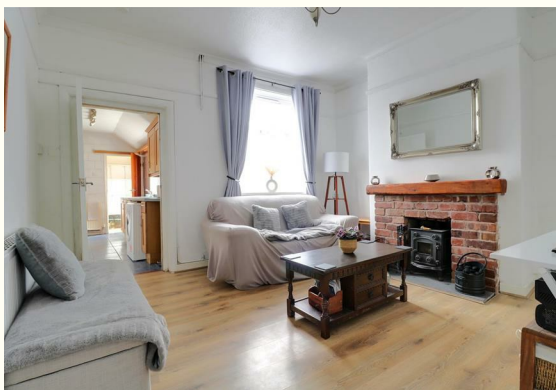
12'6" x 11'9" (3.817 x 3.596)

Laminate flooring, log burner, UPVC double glazed window, ceiling light point, radiator, under stairs storage cupboard.

#### Kitchen

12'6" x 7'0" (3.817 x 2.142)

Tiled flooring, tiled walls, UPVC double glazed window, ceiling light point, radiator, door leading to passageway, stainless steel sink with drainer, wall and base units, space and plumbing for appliances.







#### **Rear Hall**

Tiled flooring, UPVC double glazed rear door, ceiling light point, access to pantry/storage cupboard.

#### **Landing**

Fitted carpet, two ceiling light points, loft access.

#### **Bedroom One**

12'6" x 11'1" (3.833 x 3.385)

Laminate flooring, UPVC double glazed window, ceiling light point, radiator.

#### **Bedroom Two**

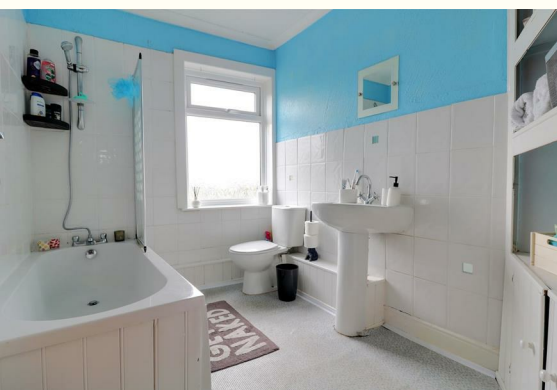
11'9" x 8'10" (3.602 x 2.713)

Fitted carpet, UPVC double glazed window, ceiling light point, radiator, storage cupboard, views over gardens/fields to the rear.

#### **Bathroom**

8'9" x 6'7" (2.671 x 2.013)

Vinyl tile effect flooring, UPVC double glazed window, ceiling light point, radiator, part tiled walls, W/C, pedestal wash basin, bath with mains shower.



#### **Outside**

The property features a paved forecourt to the front, whilst the rear yard is paved with a storage shed/outbuilding.

#### **Council Tax Band**

The council tax band for this property is A.

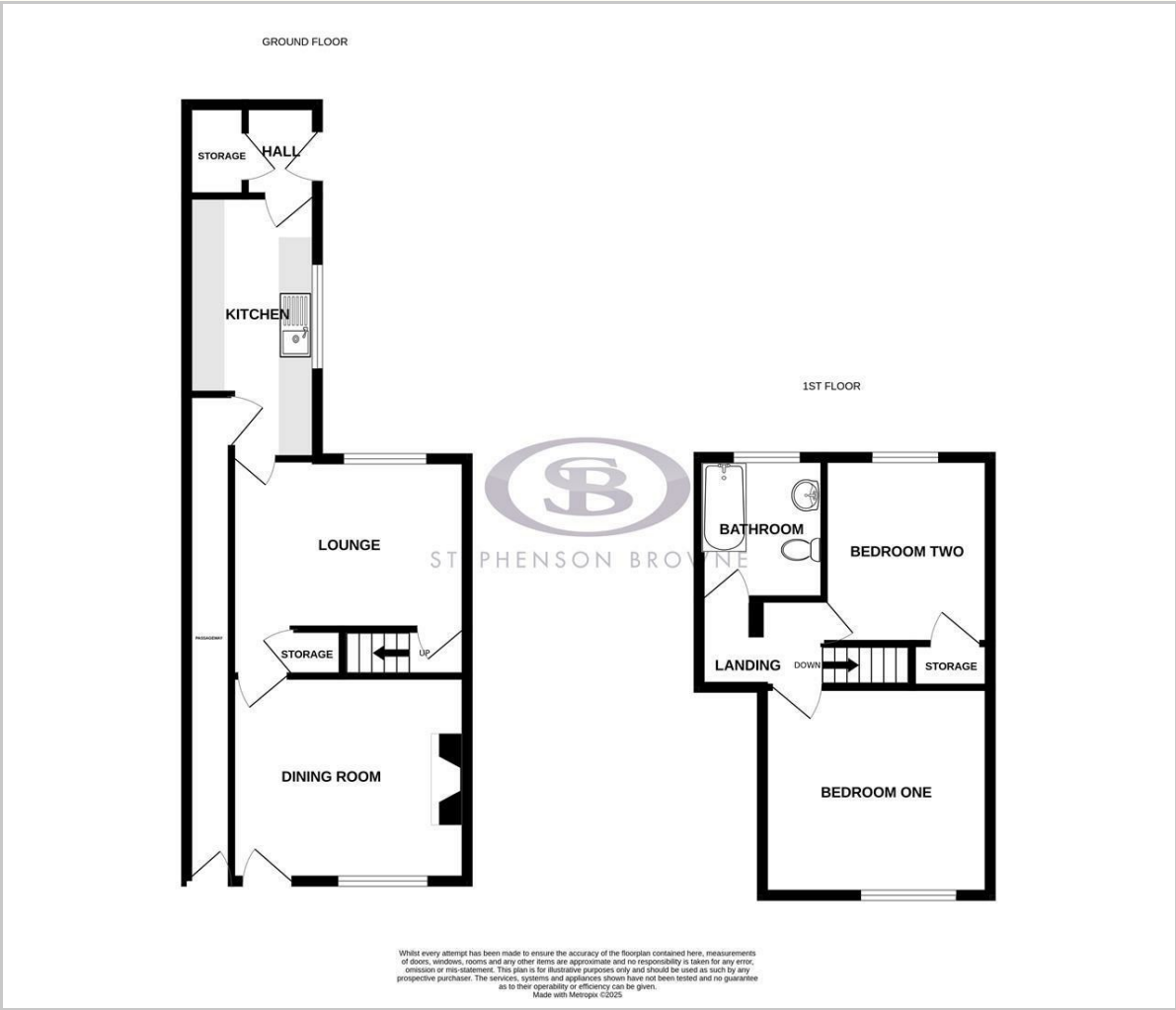
#### **NB: Tenure**

We have been advised that the property tenure is FREEHOLD, we would advise any potential purchasers to confirm this with a conveyancer prior to exchange of contracts.

#### **NB: Copyright**

The copyright of all details, photographs and floorplans remain the possession of Stephenson Browne.

Floor Plan



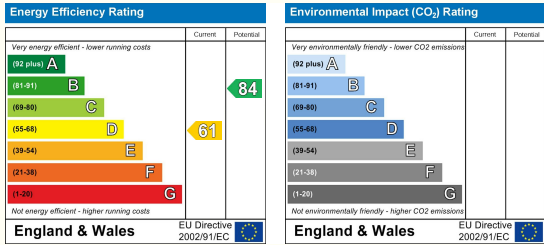
Viewing

Please contact our Alsager Office on 01270 883130 if you wish to arrange a viewing appointment for this property or require further information.

Area Map



Energy Efficiency Graph



NOTICE: Stephenson Browne for themselves and for the vendors or lessors of this property whose agents they are give notice that: (1) the particulars are set out as a general guideline only for the guidance of intending purchasers or lessees, and do not constitute, nor constitute part of, an offer or contract; (2) all descriptions, dimensions, references to condition and necessary permissions for use and occupation, and other details are given in good faith and are believed to be correct but any intending purchasers or tenants should not rely on them as statements or representations of fact but must satisfy themselves by inspection or otherwise as to the correctness of each theme; (3) no person in the employment of Stephenson Browne has any authority to make representation or warranty whatever in relation to this property. (4) fixtures & fittings are subject to a formal list supplied by the vendors solicitors. **Referring to:** Move with Us Ltd **Average Fee:** £123.64